



INSTITUTE
OF THE MOTOR
INDUSTRY

IMI eLEARNING (USA) MULTIMEDIA BLENDED LEARNING PLATFORM

*IMI eLearning provides on and off line support for
Light Vehicle and Accident Repair learners.*



IMI eLEARNING (USA)

IMI eLearning is a bespoke learning platform that supports Automotive and Collision Repair training.

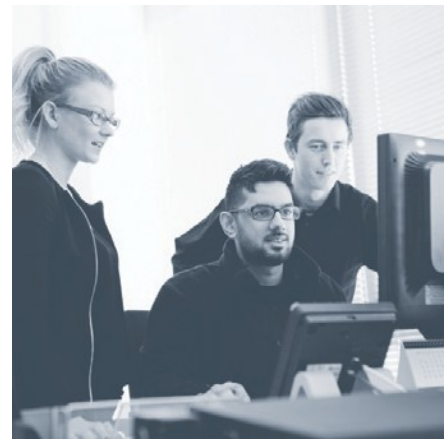
The platform uses a blend of multimedia to bring learning to life through interactive activities, 3D imagery, in-depth explanations and links to relevant articles for further study. eLearning encourages users to undertake studies through a range of learning methods.

WHO IS eLEARNING SUITABLE FOR?

IMI eLearning is suitable for use by training organizations, companies, schools or colleges that offer automotive qualifications or need updating. The platform is customizable to meet all requirements. The material is designed to be used by both instructors and learners, in classroom environments and at home where learners can access the platform independently whilst instructors track their progress.

VALUE TO TRAINING ORGANIZATION

- Instructor preparation is reduced or eliminated
- Provides self-assignments and practical worksheets
- Aligns to qualifications and other awards
- Access to curriculum plans and job cards/repair orders
- Interactive features keep learners engaged
- Contains interactive eLearning features
- Web access available 24/7
- Consistency across teaching staff
- Engaging recruitment tool
- Recognized by manufacturers
- Excellent support
- Easy to monitor learner progress
- Meets industry needs



LEARNER BENEFITS

- Students can study at a pace, and in a way, that suits their learning preference
- Engaging animations, videos and activities bring to life explanations, components and systems
- All text can be heard as a voiceover
- Access to photos, diagrams and interactive content to aid learning
- Glossaries and a virtual toolbox
- Web access available anywhere anytime
- Engaging ways to learn
- Built-in machine translation to over 50 languages

CENTRE OPTIONS



“eLearning is going very well, the kids love it... it is user friendly, they can access the system from home and use it for projects, assessments etc. It’s easy to monitor progress, learning and assessments”.

IMI eLearning Online

VIRTUAL LEARNING ENVIRONMENT (VLE)

The VLE is an online version of IMI eLearning where organizations can have a dedicated area that is customizable. The VLE is accessible 24/7 for learners and instructors to access at home, on-the-go, and in the classroom. Learners can take formative online tests and print off certificates to demonstrate their achievement. Instructors can monitor learners’ progress, see how much time they have spent on each section and access test results to keep an up-to-date development log for each learner.

EXTRA RESOURCES

There are a variety of learning methods available to students on the eLearning platform. These include on-screen text, videos, animations and a variety of activities to suit different study styles. Full color textbooks are also available to support the electronic materials.

AUTOMOTIVE

The Automotive platform contains materials which cover the entire curriculum from basic to advanced, making it a useful tool for learners to update their skills or in preparation for assessments. The USA version is structured to meet MLR, AST and MAST requirements but can also be restructured to meet specific needs.

The materials are both innovative and flexible. Students can have access to:

- 4,500 multimedia learning screens
- 1,600 multiple-choice questions
- 40 written assignments
- 300 task list worksheets
- 2,500 glossary entries
- 50 3D models
- 2 full color textbooks
- 3 practical worksheet textbooks



COLLISION REPAIR

The Collision Repair focused platform provides teachers with specific information to aid delivery and development of learners. The materials included cover the core elements of body, paint and MET and are aligned with national standards, enabling the eLearning platform to become an integral part of each learners' study.

The Collision Repair materials are provided in a variety of formats to match each style of learning. Students who focus on Collision Repair will have access to:

- 2,500 multimedia learning screens
- 600 multiple-choice questions
- 2,500 glossary entries
- 2 full color textbooks



NEXT STEPS

IMI eLearning continues to evolve in line with the needs of the industry, reflecting the latest technology and equipment, as well as qualification requirements. This ensures that learners are only viewing accurate and relevant information.

To find out more about the IMI eLearning platform, visit www.theimi.org.uk/elearning

Contact us on [**elearning@theimi.org.uk**](mailto:elearning@theimi.org.uk) to try a free demo version of IMI eLearning.

Institute of the Motor Industry
Fanshaws,
Brickendon,
Hertford SG13 8PQ

✉ elearning@theimi.org.uk
☎ +44 (0) 1992 511 521
🐦 @the_IMI
🌐 theimi.org.uk/elearning